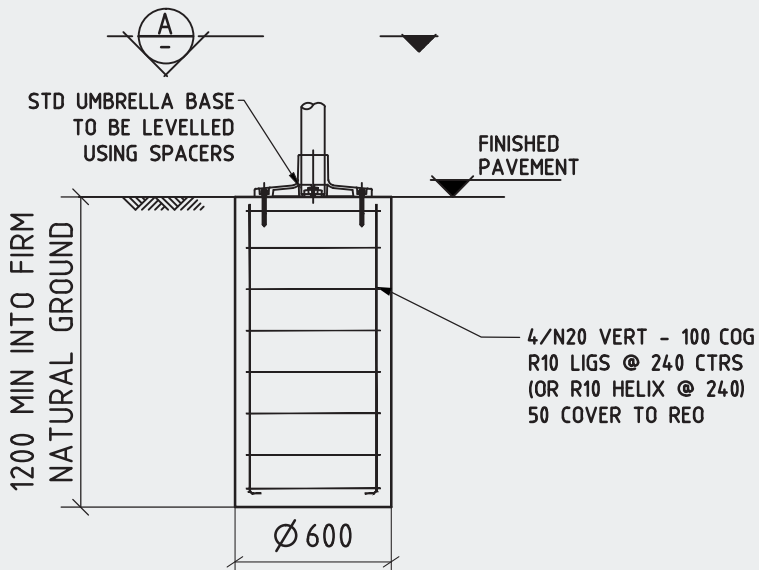
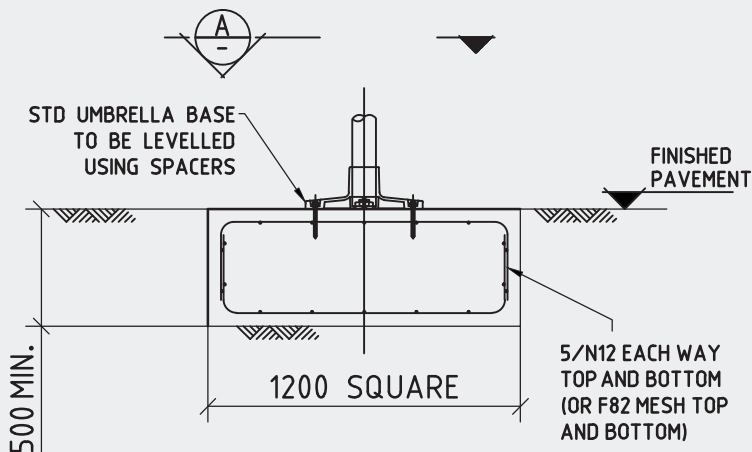


A	FOR CONSTRUCTION	EK	25.02.14
REVISIONS			

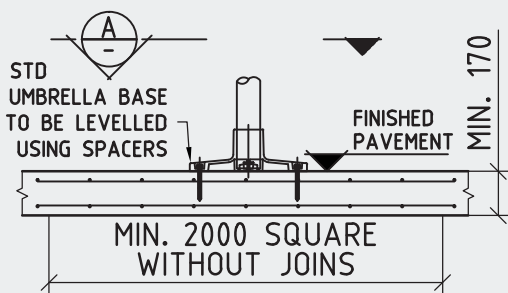
WIND RATED TO W41



FOOTING OPTION A - BORED PIER



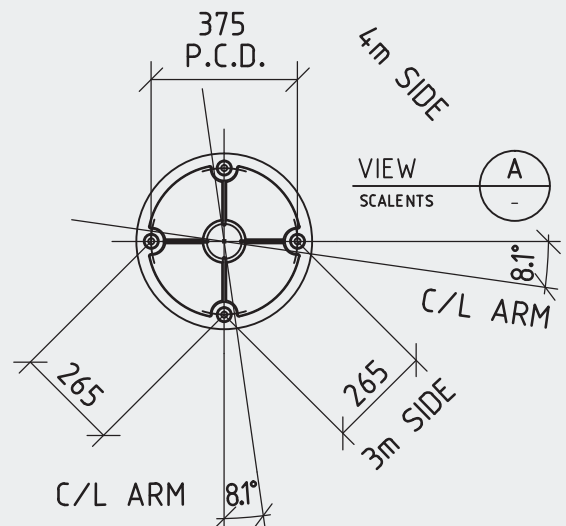
FOOTING OPTION B - PAD FOOTING



FOOTING OPTION C - EXISTING SLAB

NOTES

- 1: THIS FOOTING DETAIL IS SUITABLE FOR FOUNDING IN NATURAL UNDISTURBED MATERIAL WITH A MINIMUM ALLOWABLE BEARING CAPACITY OF 100kPa.
- 2: IF FOOTING IS IN FILL MATERIAL PLEASE REFER TO SKYSPAN UMBRELLA FOR SITE SPECIFIC FOOTING DESIGN.
- 3: THIS FIXING DETAIL IS NOT APPLICABLE FOR CANTILEVER UMBRELLAS.
- 4: ALL WORKMANSHIP AND MATERIALS TO BE IN ACCORDANCE WITH AS3600.
- 5: EXCAVATIONS TO BE CLEAN + FREE FROM LOOSE MATERIAL.
6. CONCRETE $f'c = 25MPa$.
7. MAXIMUM AGGREGATE SIZE TO BE 20mm.
8. CONCRETE SHOULD BE VIBRATED AFTER POURING, AND KEPT DAMP FOR AT LEAST 7 DAYS TO ASSIST CURING.



TYPICAL H.D. BOLT DETAILS

- 4/M12 Gr4.6 GALV. H.D. BOLTS 110 MIN EMBEDMENT 100 MIN EDGE DISTANCE USE RAMSET 101 RESIN OR EQUIV.
OR
POWERS EXCALIBUR SCREWBOLT - MIN 90 EMBEDMENT 100 MIN EDGE DISTANCE
OR
THREADED INSERT ANCHORS WITH M12 SOCKET HEAD CAP SCREWS BOLT HEAD TO BE FLUSH WITH SLAB WHEN UMBRELLA REMOVED
ALL FIXINGS TO BE INSTALLED IN ACCORDANCE WITH MANUFACTURERS INSTRUCTIONS

Project Name 4m x 3m RECTANGULAR TYPHOON UMBRELLA		This document is copyright and remains the property of Skyspan Shade Pty. Ltd It must not be used or copied without the written consent of Skyspan Shade Pty. Ltd.	
Title GENERAL ARRANGEMENT WITH FOOTING DETAILS		Date: FEB 14	Drawn: EK
		Checked: GM	Scale: A4: NTS
		Drawing No. T43R-1001	Revision A