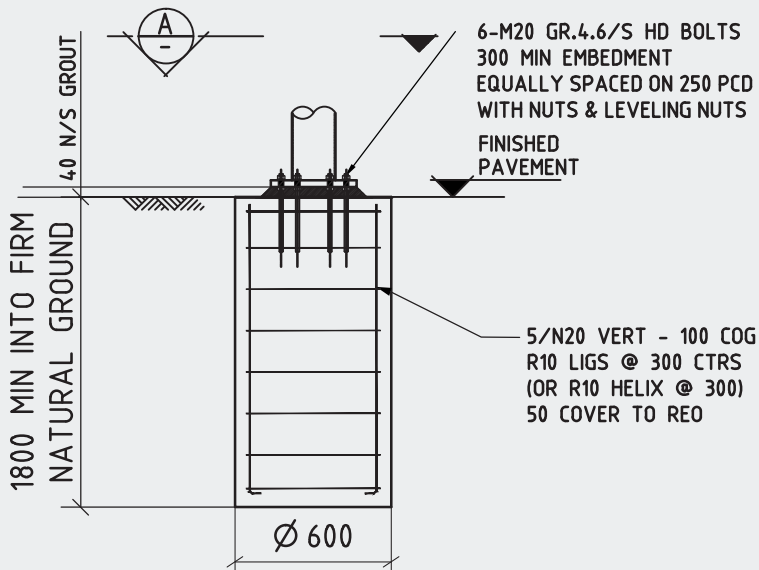


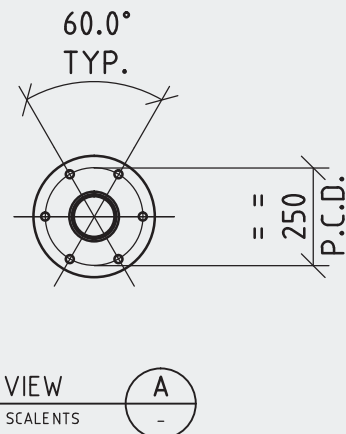
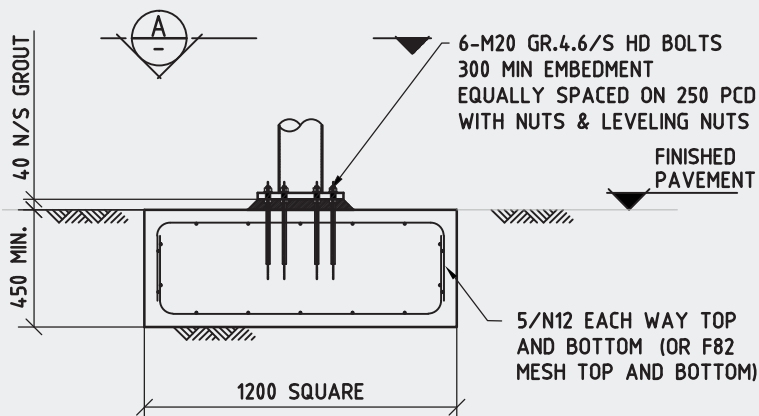
WIND RATED TO W41



#### NOTES

- 1: THIS FOOTING DETAIL IS SUITABLE FOR FOUNDING IN NATURAL UNDISTURBED MATERIAL WITH A MINIMUM ALLOWABLE BEARING CAPACITY OF 100kPa.
- 2: IF FOOTING IS IN FILL MATERIAL PLEASE REFER TO SKYSPAN UMBRELLA FOR SITE SPECIFIC FOOTING DESIGN.
- 3: THIS FIXING DETAIL IS APPLICABLE FOR CANTILEVER UMBRELLAS.
- 4: ALL WORKMANSHIP AND MATERIALS TO BE IN ACCORDANCE WITH AS3600.
- 5: EXCAVATIONS TO BE CLEAN + FREE FROM LOOSE MATERIAL.
6. CONCRETE  $f'c = 25\text{MPa}$ .
7. MAXIMUM AGGREGATE SIZE TO BE 20mm.
8. CONCRETE SHOULD BE VIBRATED AFTER POURING, AND KEPT DAMP FOR AT LEAST 7 DAYS TO ASSIST CURING.

#### FOOTING OPTION A - BORED PIER



#### FOOTING OPTION B - PAD FOOTING

<b>Project Name</b> 3/4/5/6.0m SQUARE PANORAMA UMBRELLA	This document is copyright and remains the property of Skyspan Shade Pty. Ltd It must not be used or copied without the written consent of Skyspan Shade Pty. Ltd.		
<b>Title</b> GENERAL ARRANGEMENT WITH FOOTING DETAILS	<b>Date:</b> FEB 14	<b>Drawn:</b> EK	<b>Checked:</b> GM <b>Scale:</b> A4:NTS
	<b>Drawing No.</b> P34560S-1001		<b>Revision</b> A